

MOBILITY

**Stay young,
keep on the move**

Bone, joint, and muscle health are essential for keeping active as we age. Stay mobile for as long as possible with collagen from Rousselot® Health & Nutrition

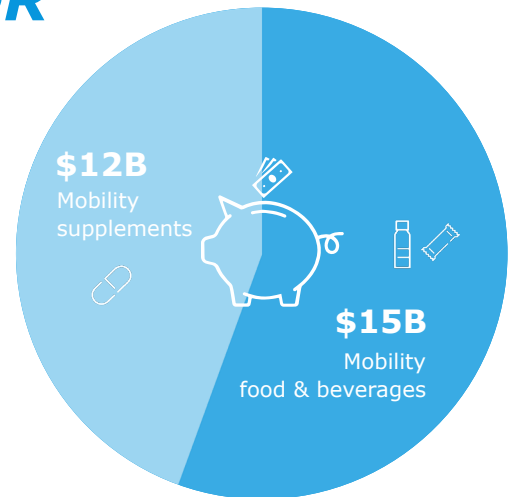
Rousselot
Health & Nutrition

MOBILITY: TOP OF MIND FOR TODAY'S CONSUMERS

Today's health-conscious consumers are diversifying their knowledge and interests. One exciting growth area in the health market is mobility.

A strong market on the rise

Mobility functional foods & beverages, as well as supplements, have a strong market value.¹



Global retail value
(USD 2021)

CONSUMER PROFILES

Usual suspects

Aging population

- Elderly
- Healthy agers

Growth opportunities

Digital consumers & lifestyle users

Sporters

- High to medium activity
- Active lifestyle

Overweight population

Consumers ♥ mobility

Globally in 2021:



1 in 3

Consumers take supplements for mobility¹



1 in 5

Consumers say that they purchased food & beverages to improve mobility²

OUR COLLAGEN SOLUTIONS FOR MOBILITY



Peptan

Collagen peptides for a healthy lifestyle

The scientifically documented and world leading collagen peptides brand³. Available with porcine, bovine, and fish origin, including a wild marine fish option.

[Find out more](#)



Colartix

Unique collagen cartilage matrix for flex in motion

Joint care innovation at a low daily dosage, fueled with consumer-based science.

[Find out more](#)



ProTake

Unlocking application potential with hydrolyzed collagen

Creating reformulated foods and beverages with increased collagen content, reduced fat and sugar as well as improved texture and taste.

[Find out more](#)

Joint



Bone



Muscle



Joint



Protein



Based on scientific studies

Based on food science



Mobility

Discover the science about these brands:

[Download from website](#)

BENEFITS OF OUR SOLUTIONS

Our collagen solutions come with numerous benefits – not just for consumers, but also for manufacturers.

Application versatility



Fast, superior cold- and warm-water solubility



Neutral in taste and odor, even at high concentrations



Transparent in solution



High stability in a wide range of pH values



Heat resistance



Rousselot's Global Sensory Program draws together insight from our lab analysts and sensory panels to test our products in a scientific, objective and standardized manner. The Sensory Lab is the go-to resource for any questions or ideas you may have about sensory performance.



Peptan Flex & Go Drink

Excellent for bone & joint health plus supporting muscle mass. One glass of this delicious berry drink contains 5g of Peptan, acerola, plus calcium and vitamin D. Naturally high in vitamin C and fiber, Flex & Go is the perfect drink to improve your mobility! It is a source of protein and of calcium and vitamin D, allowing for EFSA health claims for maintenance of bone health and muscle mass.

Want to find out more about this recipe or be inspired on more? [Contact us!](#)

Mix & Match

Rousselot collagens are compatible to blend with other functional ingredients holding mobility health claims as approved by (FDA/EFSA/etc.) such as:

Ca

Calcium

- Is needed for the maintenance of normal bones (EFSA)¹
- Contribute to normal muscle function (EFSA)¹
- Function/Structural claim (FDA)²
Example: "builds strong bones"

D

Vitamin D

- Vitamin D contributes to the maintenance of normal bones (EFSA)³
- Function/Structural claim (FDA)² Example: "supports strong bone growth"

Mix

Calcium & Vitamin D

Adequate calcium and vitamin D throughout life, as part of a well-balanced diet, may reduce the risk of osteoporosis. (FDA)⁴

Source: EFSA, FDA,

1. EFSA Journal 2009;7(9):1210

2. FDA Dietary Supplement Health and Education Act of 1994 (DSHEA)

3. EFSA Journal 2009;7(9):1227,

4. FDA FDA-2004-P-0205-0006

Complete your product brand story with Peptan® and Colartix®.

Rousselot Health & Nutrition is a world leader in trusted, science-backed collagen-based solutions. Many of our customers have engaged us in co-developing successful ingredient branding strategies. Selected customers benefit from our endorsement of their products, with access to the Peptan and Colartix brand names and marketing materials.

Peptan Colartix

Rousselot Health & Nutrition can help you with virtually any product requirement or innovation you have in mind, offering:



Transparency



Full traceability



High standards
of quality and safety



Commitment to strong
ESG values



Global support
and expert advice

Rousselot Health & Nutrition: As Rousselot's strategic segment dedicated to health and nutrition, we are committed to developing innovative ingredients answering today's demand for solutions offering proven efficacy, full safety, and premium quality. Our customers can rely on best-in-class products, backed by trusted science as well as on our expert support in formulation, product development, and regulatory advice. Building on the success of our flagship brand Peptan, our collagen solutions offer a world of health benefits for a healthier tomorrow. Rousselot Health & Nutrition is one of three strategic markets served by Rousselot. Rousselot is Darling Ingredients' Health Brand.

Disclaimer All rights reserved. No part of this brochure may be reproduced, distributed or translated in any form or by any means, or stored in a database or retrieval system, without the prior written permission of Rousselot. Rousselot alone retains the copyright to the entire content of this brochure and the intellectual property rights to all designations of our products stated in this brochure and intellectual property rights to the products themselves. Nothing in this brochure constitutes a license (explicit or implicit) of any of Rousselot's intellectual property rights. The duplication or use of product designations, images, graphics and texts is not permitted without Rousselot's explicit prior written consent. Rousselot makes no representation or warranty, whether expressed or implied, of the accuracy, reliability, or completeness of the information, nor does it assume any legal liability, whether direct or indirect, of any information. Use of this information shall be at your discretion and risk. Nothing herein relieves you from carrying out your own suitability determinations and tests and from your obligation to comply with all applicable laws and regulations and to observe all third party rights. This product is not intended to diagnose, treat, cure, or prevent any disease. You should always consult your medical provider when using the product together with medical treatments, diets or fitness programs. The uses and claims for Rousselot's products recommended in the brochure should be adapted to the current local regulatory environment. This statement has not been evaluated by the Food and Drug Administration.

peptancollagen
PeptanbyRousselot
RousselotHealth
Rousselot

Rousselot Headquarters

Rousselot B.V.
Kanaaldijk Noord 20
5681 NM Son
The Netherlands

+31 499 364 100
peptan.com
rousselot.com/health

Rousselot
Health & Nutrition